

Caring and Creative Schools Imaginary Communities

We are looking for new partner schools who are interested in developing and enhancing their creative and caring approach across their school.

Together we will build on Chol's Imaginary Communities (IC) approach which has been co-created with teachers and senior leaders in schools over the last 10 years.

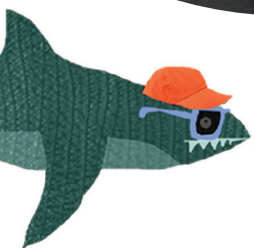


IC is proven to:

- Engage children in learning across the curriculum
- Increase attainment in writing
- Further develop teacher confidence in playful, arts based practice and pedagogies
- Nurture positive mental health in the classroom

Please do get in touch with Carly if you are a teacher, an artist, or a senior leader for an informal chat about getting involved

carly@wearechol.co.uk



phf Paul Hamlyn Foundation

chol

@choltheatre

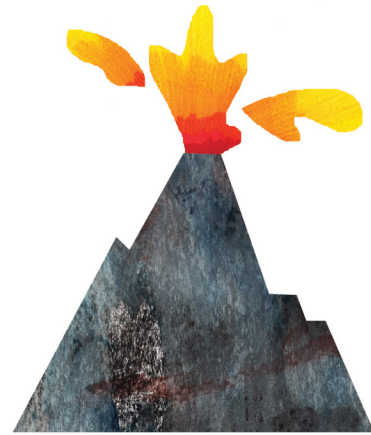
www.wearechol.co.uk

Option One: Creative & Caring Partner School

(8 partnerships available November 2023 - July 2024)
An Artist in Residence model that includes:

- Weekly visits from an Imaginary Communities Artist to work with teachers and children
- CPD opportunities for all staff via twilight or staff inset training (in person or online options available)
- Extensive CPDL programme for 2 x lead teachers supported by a programme of enquiry-based research
- A final creative report to share your schools learning with colleagues, Governors, and other Creative and Caring schools in the region
- Opportunity to connect regionally and nationally through Chol's wider Creative and Caring Schools project

Cost: this partnership is heavily funded by Paul Hamlyn Foundation. Schools will be asked to provide £1000



Option Two: Whole School Introduction to Imaginary Communities

(3 available October 2023 - July 2024)

This offer gives every class in a school the chance to work with an Imaginary Communities Artist and experience an IC introduction lesson.

All staff in the school are invited to an additional CPD session further supporting teachers to use more story-making and play within the curriculum.

Cost: schools will be asked to provide £300 match towards the cost of the experience.

